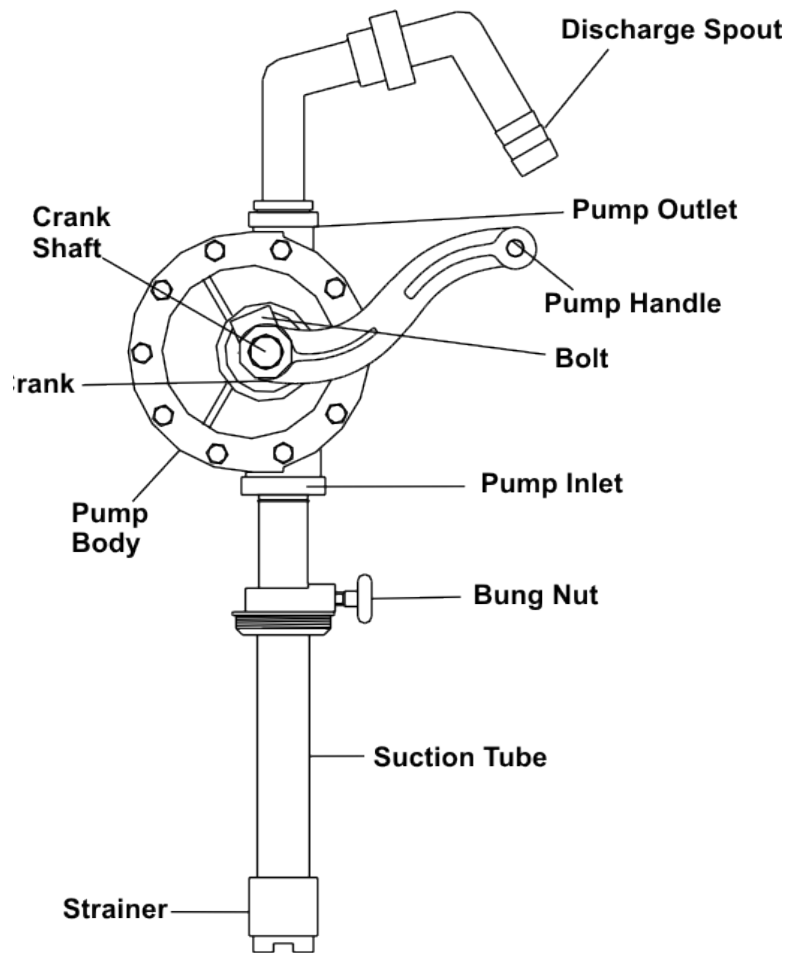


Thank you for purchasing your PLASTIC ROTARY PUMP. Please read instructions before using product and save for future reference. Observe all safety information, warnings, and cautions when using this product. Failure to comply with instructions could result in persona injury and/or damage to product or property. Use for pumping aggressive chemicals including solvents, hydrocarbons and fuel. NOTE: This is a general service instruction sheet & specifications described may not match your dispenser exactly.

PLASTIC ROTARY BARREL PUMP



Your Plastic Rotary Pump is built to these high quality specifications.

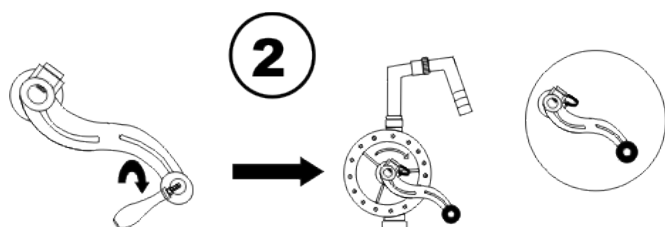
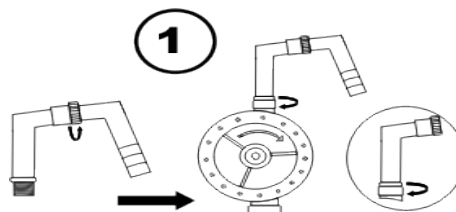
- Pump body, outlet and suction tube are made from glass filled polypropylene.
- Veins are made from Ryton high performance resin.
- Seals used in the pump are made from Viton rubber.
- All pump hardware is stainless steel.

Additional Specifications

Pump delivers 1.3 gal / 20 turns (5 litre).

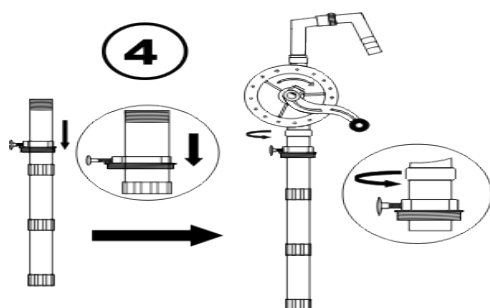
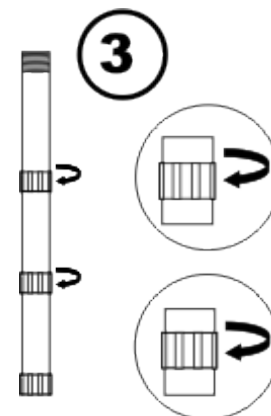
Assembly & Operation

Assemble the 2 parts of the Discharge spout together & fasten the assembly onto the outlet on the main pump body



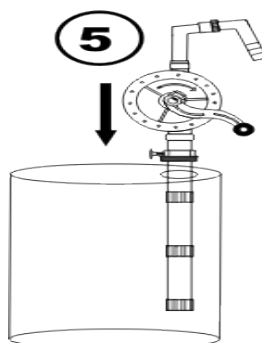
Affix the pump handle onto the crank & connect the crank to the crankshaft on the pump body. Secure the connection using the bolt provided. Make sure that the bolt fits onto the depression in the crankshaft

Assemble the suction tube parts, depending upon the drum size on which the pump is to be installed. The suction tube part with the strainer may be connected direct onto the pump inlet or assembled with one extension or both extensions. All 3 parts must be connected for use with 55-gallon drums. Use a sealant to connect the suction tube parts for a totally leak-proof connection.

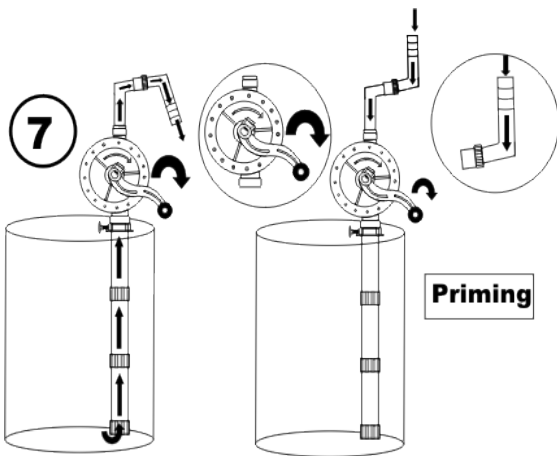
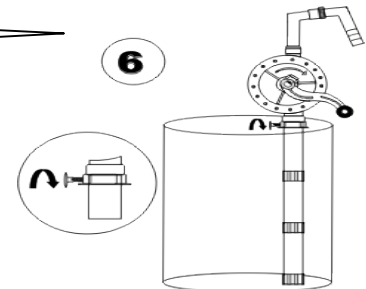


Choose the bung adapter that best fits your drum. Each pack comes with two adapters, which have slight difference in the threads to suit different drums (metal & plastic). Slide the selected 2" bung onto the tube from the top end & tighten the suction tube onto the inlet on the main pump body. Use a thread sealant to connect the suction tube parts for a totally leak-proof connection.

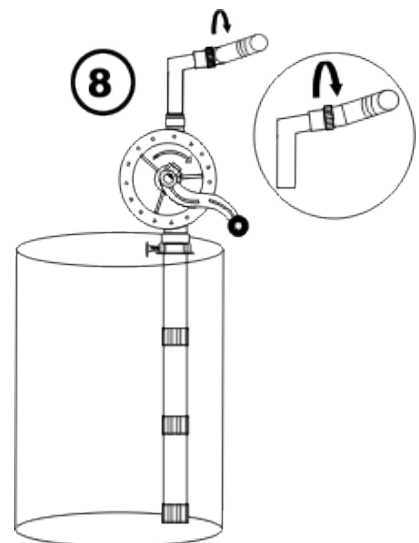
Insert the pump assembly into the drum from the 2" bung opening on the drum.



Once the bottom of the pump touches the base of the drum, securely fasten the bung onto the drum. Now very lightly tighten the bung onto the suction tube



Take an empty container & place it below the discharge spout. Start rotating pump handle. Within a maximum of 7 rotations, pump will be primed & will start dispensing fluid. In a rare case, where the pump does not get primed reverse the outlet discharge spout on the pump & pour about 30 ml of any oil into the outlet & pump the handle for about 7 rotations.



Once you have completed pumping the liquid, invert the discharge spout sideways for a non-drip operation.

If the pump is re used after an extended period of time, it may loose its prime & need re-priming, follow Step 7

COMPATIBILITY CHART

Liquid	Compatibility	Liquid	Compatibility
Acetaldehyde aq.	No	Hydrobromic acid aq.	No
Acetic acid aq.	No	Hydrogen peroxide aq.	Yes
Acetone	No	Hydrogen sulphide aq.	No
Aluminum chloride aq.	Yes	Isopropyl Alcohol	Yes
Aluminum sulphate aq.	Yes	Kerosene	Yes
Ammonia gas	No	Lacquer	No
Ammonium chloride aq.	Yes	Magnesium chloride aq.	Yes
Amyl Alcohol	No	Methyl chloride	No
Aniline	No	Methyl ethyl ketone	No
Antifreeze	Yes	Mineral Oils	No
Barium chloride aq.	Yes	Napthalene	Yes
Benzene	Yes	Nickel sulphate aq.	Yes
Boric acid aq.	Yes	Oxalic acid aq.	Yes
Butyl Alcohol	Yes	Ozone	No
Carbon tetrachloride	No	Petrol	Yes
Chloroform	No	Phenol	Yes
Chromic acid aq.	Yes	Potassium chloride aq.	Yes
Citric acid aq.	Yes	Soap Solutions	Yes
Cresylic acid	No	Sodium nitrate aq.	No
Cyclohexanol	No	Solvents	No
Cyclohexanone	No	Stearic acid	Yes
Detergent	Yes	Sulphuric acid aq.	Yes
Diesel	Yes	Toluene	No
Ethers	No	Transformer Oil	Yes
Ethyl acetate	No	Transmission Fluid	Yes
Ethylene dichloride	No	Trichloroethylene	No
Ethylene Glycol	Yes	Turpentine	No
Formaldehyde aq.	No	Vinyl chloride	No
Freon 12	Yes	Water	Yes
Fuel Oil	Yes	Xylene	No
Glycerine	Yes		

Note: Use of this equipment to pump other than approved fluids will void the manufacturing warranty.

Warning: Never operate the pump near fire or source of spark. Some fluids may be explosive and dangerous to pump.

Made In India